



THE SCOOP

lockdown

OUR LADY OF WALSINGHAM CATHOLIC PRIMARY SCHOOL'S
WEEKLY NEWSLETTER



TAKE A PEEK!

WELCOME

- 1

BIRTHDAYS;

STARS OF THE WEEK

- 2

KEY WORKER HUB;

REMOTE LEARNING;

- 3

FSM VOUCHERS;
COLLECTIVE WORSHIP

- 4

CONTACT DETAILS:

TEL: 0151 525 0395/0151 523 3362

EMAIL:

ADMIN@OURLADYOFWALSINGHAMPRIMARY.CO.UK

TWITTER: @OLW_PRIMARY

SCHOOL APP: OUR LADY OF WALSINGHAM

This week has been so difficult for so many people in many different ways - it is so easy, at the moment, to watch the news and to feel sad or annoyed about everything. Our school community are doing a fantastic job at keeping safe and at ensuring that pupils have learning online ready for them every morning - but it isn't always easy. We know that it isn't easy for you at home either. The results of the survey were overwhelmingly positive - and we thank you all for the commitment that you are making daily.

Wellbeing Wednesday was a timely reminder that we should be grateful for what we have. In school, we have each other; we have our health and we have a warm and safe place to be. We should celebrate that and be grateful for each other.

Yesterday was #NationalHug Day - a day that I probably would not even notice normally - but I send each and every one of you a hug - you are all doing a tremendous job. I know that you will wish the very same to all of our staff! Together, we are all amazing! YES AMAZING!

Enjoy your weekend, please keep safe!

Mrs McKinnon x

STARS OF THE WEEK



Every week during 'lockdown', we will try to pick a pupil from every class who has been tremendous with their remote learning on Google Classroom. Here are this week's STARS...



CONGRATULATIONS

HAPPY BIRTHDAY

Birthdays this week ...

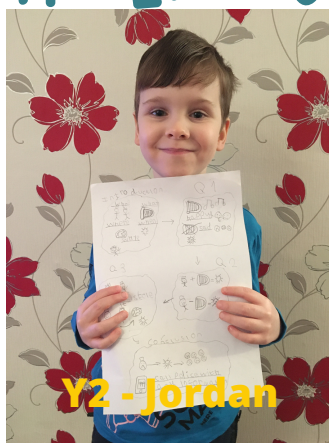
Jake (Y2)

Amelia B (Y3)

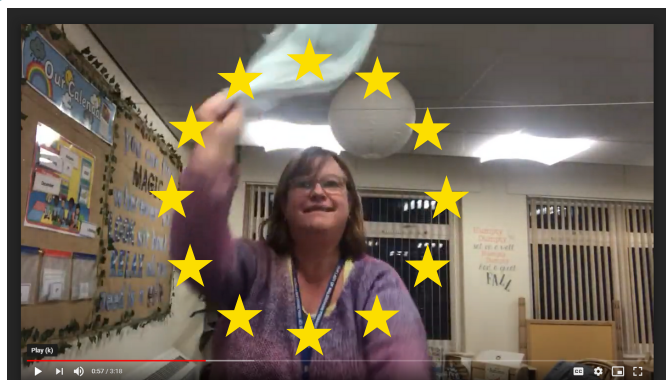
Joseph (Y2)



Nursery - Archie



Y2 - Jordan



Mrs Lindsay is our Teacher Star of the Week for the PE lessons! Move it, move it Mrs Lindsay!



Y3 - Hannah



Y1 - Emelia

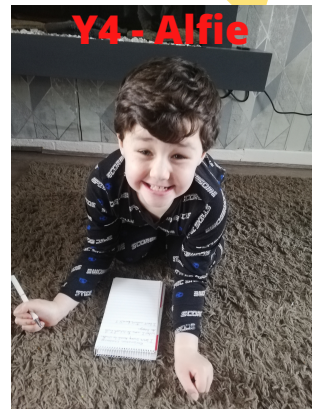


Y6 - Emily

Y5 - Alex & Georgia



Reception - Mia



Y4 - Alfie

KEYWORKER HUB

From the Department of Education:

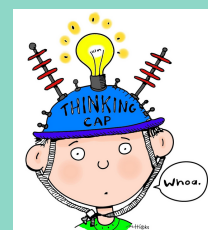
Limiting attendance at schools and colleges helps to support the reduction in the overall number of social contacts in our communities, which is a vital intervention in the context of current very high transmission rates. Schools should continue to encourage attendance of those vulnerable children and children of critical workers who need to be in school. We know this means that attendance levels vary from school to school, but aggregate school attendance is much lower than full attendance, at around only 5% in secondary schools and 20% in primary schools at present, and so we will see the desired reduction in social contacts.

Please only use the Keyworker Hub if all adults in the house are critical/key workers.



THUNKS

Can you know something without knowing that you know it?



Is there more happiness or more sadness in the world?



REMOTE LEARNING

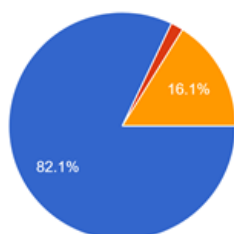
Staff will be available to answer queries and respond to learning on Google Classroom during their core hours of 9-3, but please bear in mind that they are in school half a day everyday so may not be able to respond immediately.

It is great to see how you are all getting on at home so please do share photos with us for the newsletter - via Twitter or to the admin@ourladyofwalsinghamprimary.co.uk email address.

Next week KS2 have a new TT Rockstars Battle of the Bands tournament starting - the winner will be announced weekly in the newsletter - with prizes to be won!

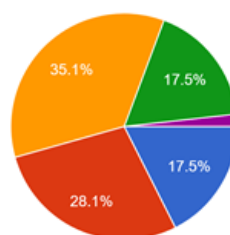
Thank you for all the feedback from the survey on the Google Classroom - we had a total of 63 responses! Thank you for all of the lovely comments - we thought that we would share some of the result today with you!

Is your child engaging with Remote Learning?
56 responses



● Yes
● No
● Somel

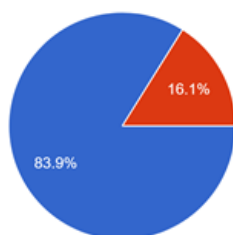
DfE guidance is that EYFS/KS1 are having 3 hours/day and KS2 4 hours/day - how long do you think your child is learning for?
57 responses



● 4 hours + /day
● 3 ~4 hours/day
● 2-3 hours/day
● 1-2 hours/day
● less than 1 hour per day

How often are they learning at home with the work set by teachers?

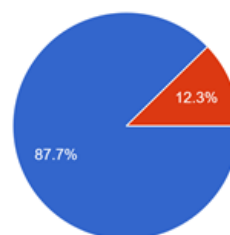
56 responses



- Every day
- 2-3 times/week
- 1/week
- Never

Has your child accessed Assembly/Wellbeing Wednesday activities ?

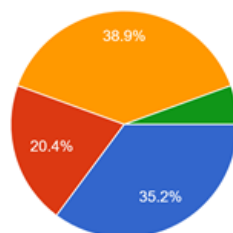
57 responses



- Yes
- No

Google Classroom - does your child find it easy to navigate?

54 responses



- Yes - my child understands how to use the platform and has responded well
- Yes - my child has had a few problems initially but is now confident
- It can be confusing sometimes for my child
- No they are really struggling with how to use the platform



WELLBEING WEDNESDAY

Theme this week: Being Grateful

Book: Believe, me Goldilocks Rocks

COLLECTIVE WORSHIP

John 1: 35-42 *John looked towards him and said, 'Look, there is the lamb of God.'*



"Nothing beats kindness," said the horse. "It sits quietly beyond all things."

Picture taken from the fantastic book:
The Boy, the Mole, the Fox, and the Horse
by Charlie Mackesy

FREE SCHOOL MEALS VOUCHERS

This week, our school has issued £30 - two weeks of vouchers through EdenRed for pupils on means-tested Free School Meals - if you have not received your vouchers via email, please let the School Office know. www.freeschoolmeals.co.uk